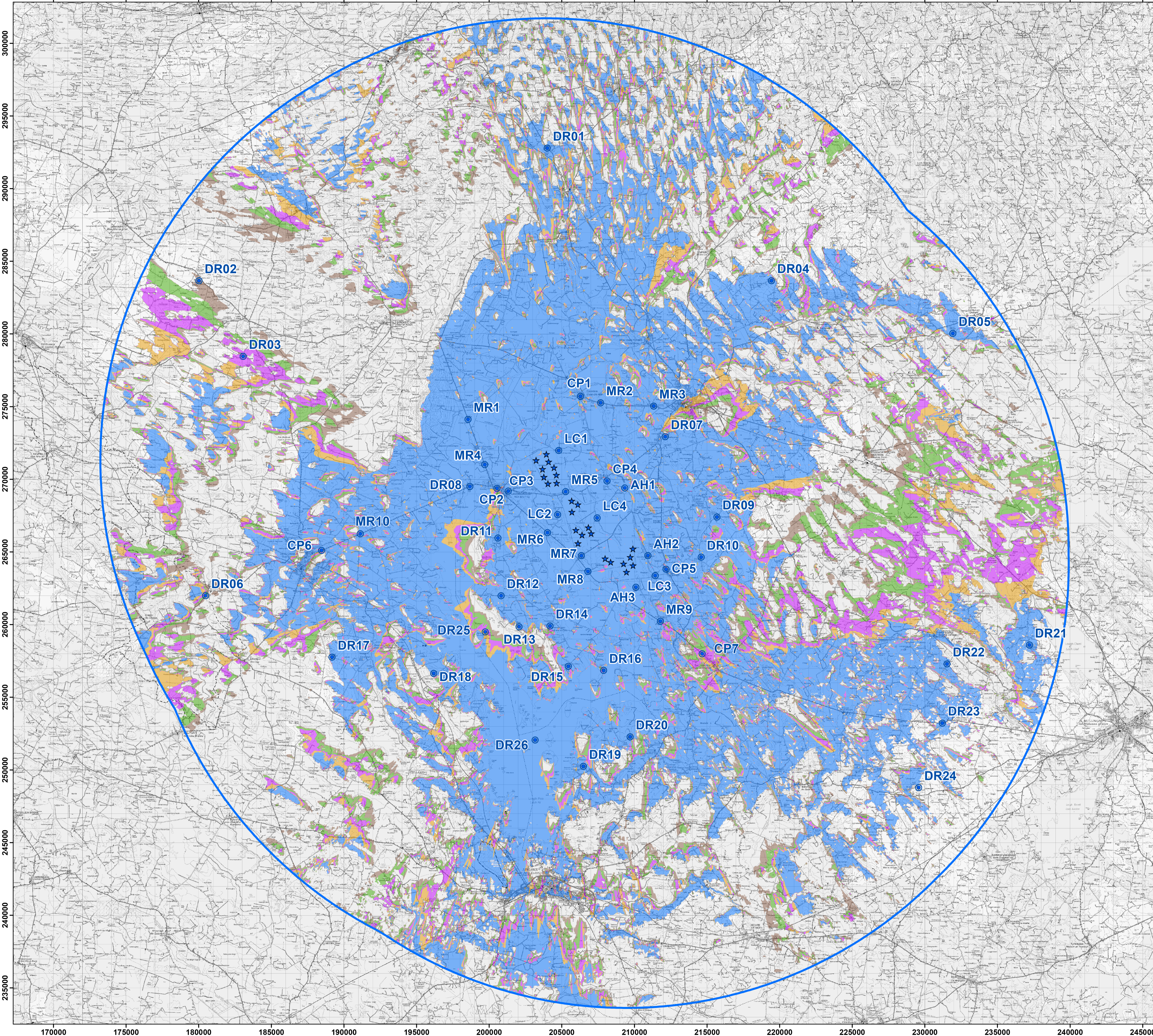


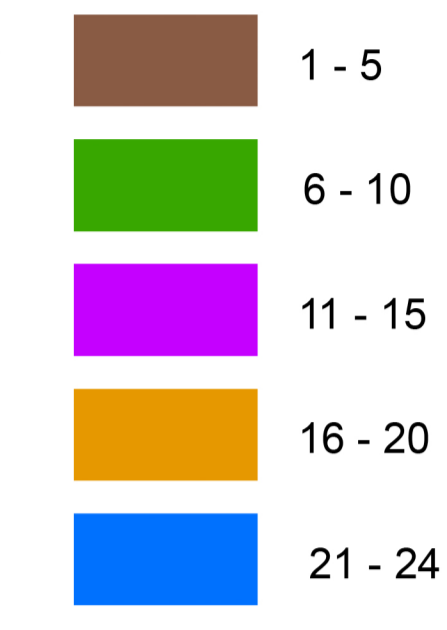
Appendix 9.3.2: ZTV (Zone of Theoretical Visibility) indicating areas that have a potential view of the proposed turbines at Derryadd (calculated for blade tip height = 185m)



Proposed Derryadd Turbines



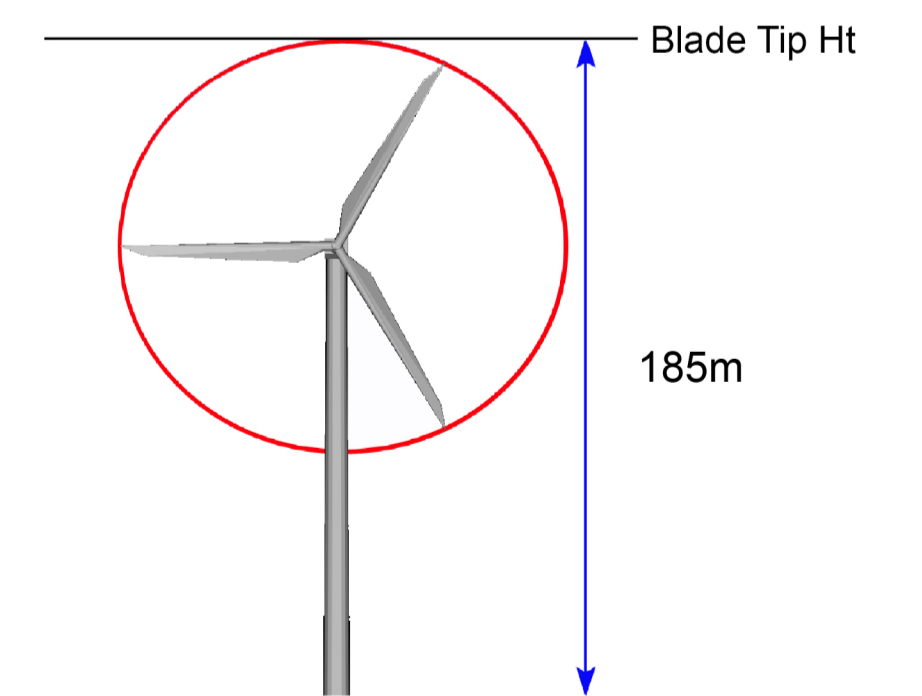
No. Turbines Visible



Photomontage Viewpoints



30km Extent



This ZTV map has been calculated such that a turbine registers as being theoretically visible to observers in the surrounding landscape once there is an unobstructed line of sight to its blade tip.

Observer Height assumed: 2m to eye-level height
Blade Tip Heights: 185m

Note: This ZTV map is calculated for landform screening only and does not take account of the significant screening effects of vegetation (hedgerows, trees) and buildings inherent across the study area.